

# Instructions for UHF Card Reader

## Introduction

The R16-7DB is an integrated UHF reader with multi-protocol compatibility, fast read rate, multi-tag reading, and waterproof design. It can be widely used in various RFID systems.

## Product specification

- Support ISO18000-6B and EPC Class1 GEN2 international standards;
- Integrated structure design, beautiful appearance, suitable for outdoor environment;
- Integrate high-performance linear polarized antennas, Recognize the long range distance stably;
- Supports tag echo signal detection, tag data filtering, clock stamping, and input and output functions;
- Recognition speed is fast, and the identification of single label can reach 140 times/second;
- Adopt frequency hopping working mode, strong anti-interference ability and high recognition sensitivity;
- Support sp) development in multiple languages, such as VC, VB, C, etc.
- Supports online upgrades, has a rich communication interface, and can be customized to the needs of users.

## Application

Warehouse Management、Supply Chain Management、Vehicle Management、Line Management、Source Management、Asset Management、Personnel Management、Attendance Management、Product Anti-counterfeiting Management

## Technical parameters

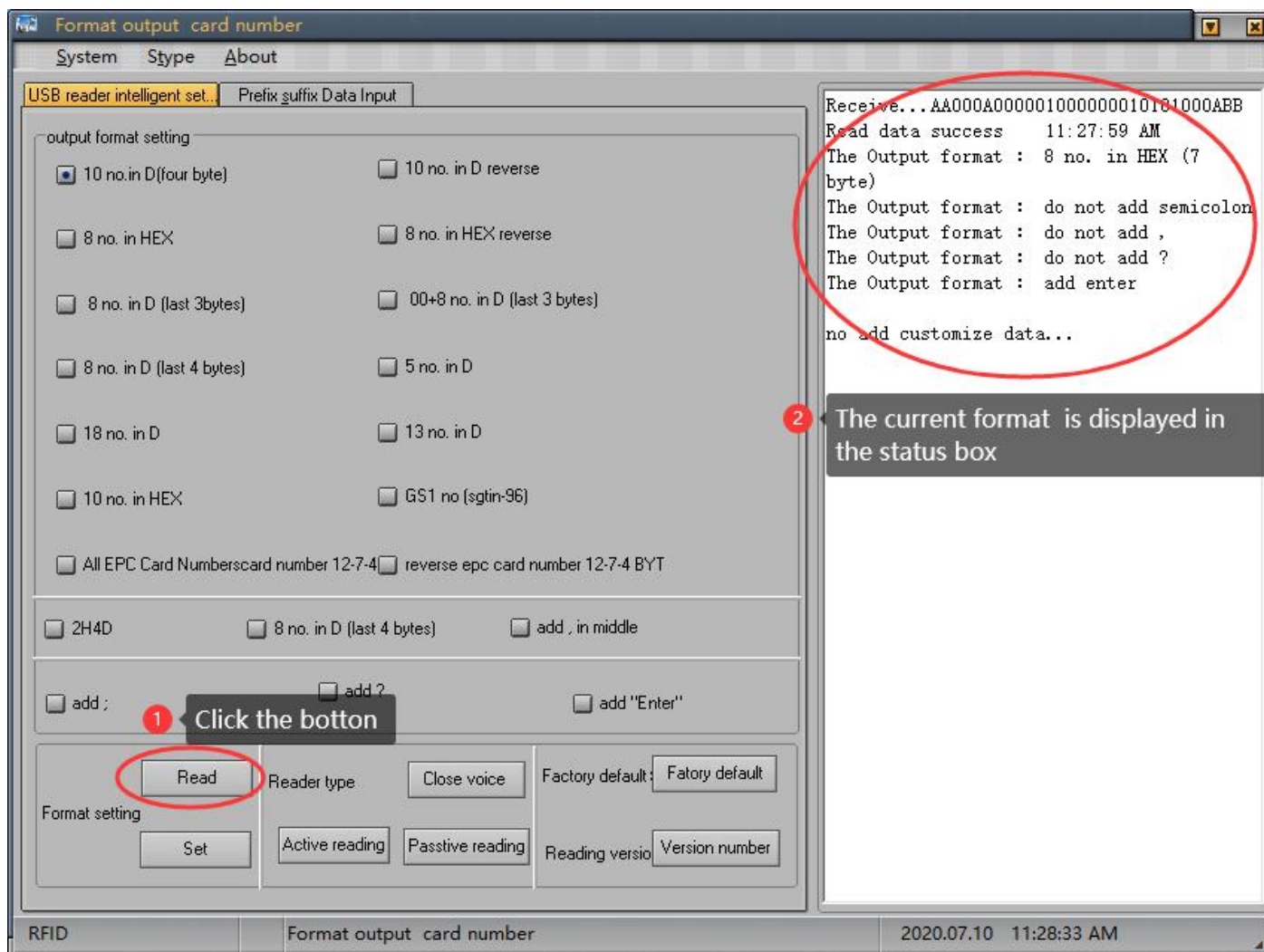
model	R16-7DB
Supported protocols	ISO18000-6C (EPC GEN2)
working frequency	ISM 902 ~ 928MHz and ISM 865 ~ 868MHz , Other frequency standards (customized)
Operation mode	Fixed Frequency or Software Programmable
RF power	0~30dBm, Software Programmable
Reading speed	Single card average reading is 64bits, less than 6ms, Software Programmable
Work mode	reading Active and reading passive, Software Programmable
Communication Ports	N:Wiegand26/34/98, RS485,RS232 ,USB E:Wiegand26/34/98, RS232,TCP ,USB
Input interface	1 way trigger input
Reading range	0-5 m(High power 0~8m)
Status indicators	buzzer
Antenna	7dbi circular antenna
Power supply	DC+9V
Size	215mm×215mm×50mm
Weight	0.8 Kg (Package:1.8kg)
Operation Temp	-20℃~+70℃

# Output format setting

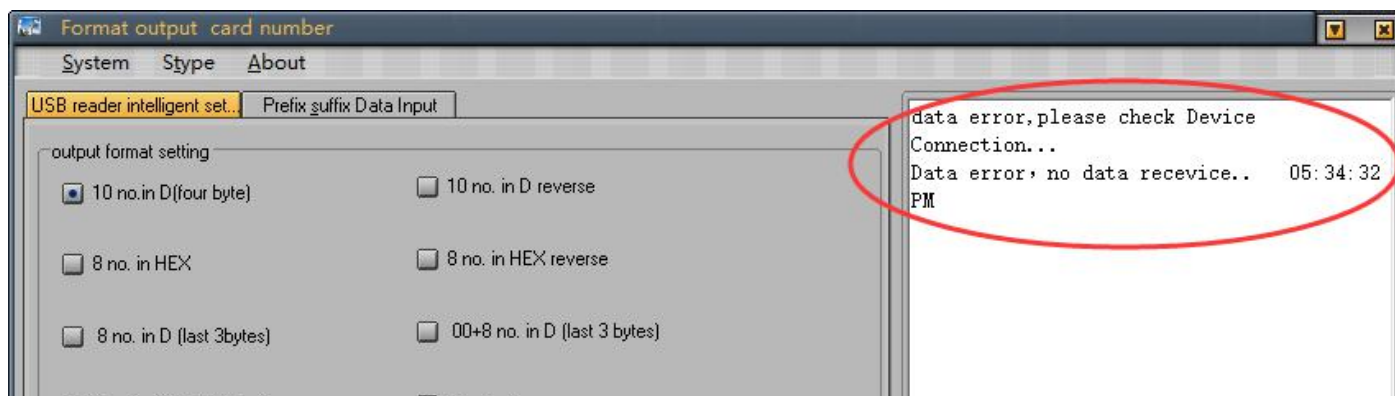
## 1、Connecting devices and software



Connect the card reader with the computer, double-click to open the application program , and click the read button. The current format of the card reader will be displayed in the status box on the right side of the software.

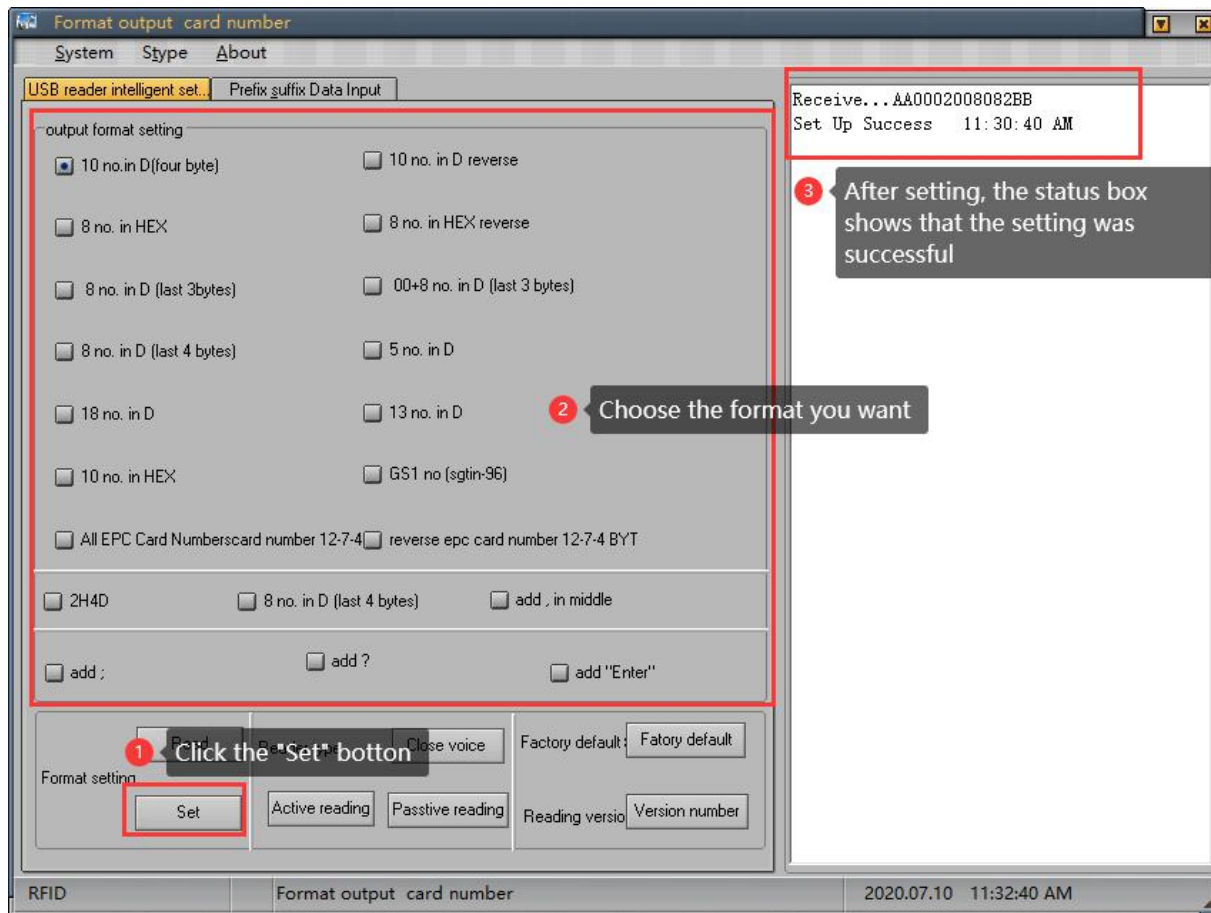


If the connection fails, see the figure below

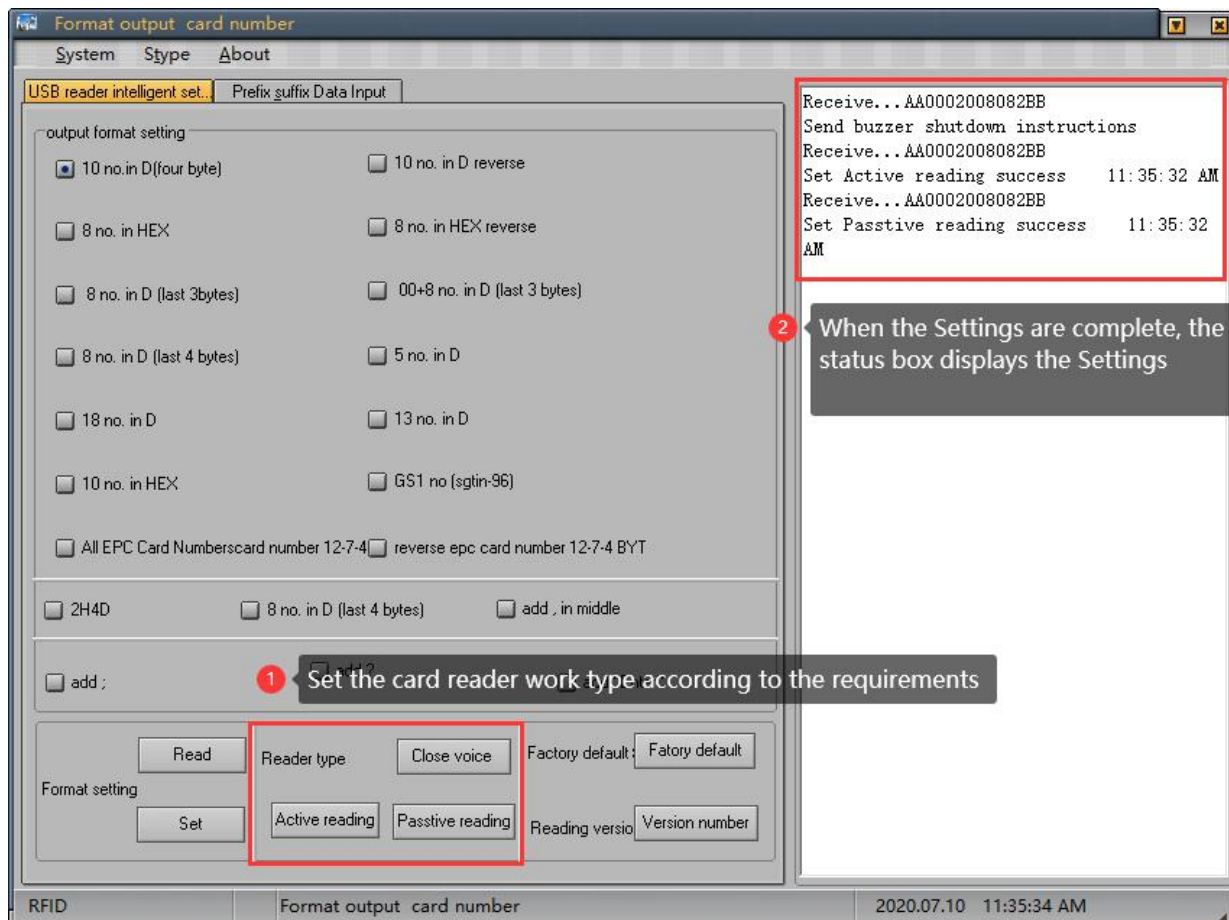


## 2、 Reader status output format

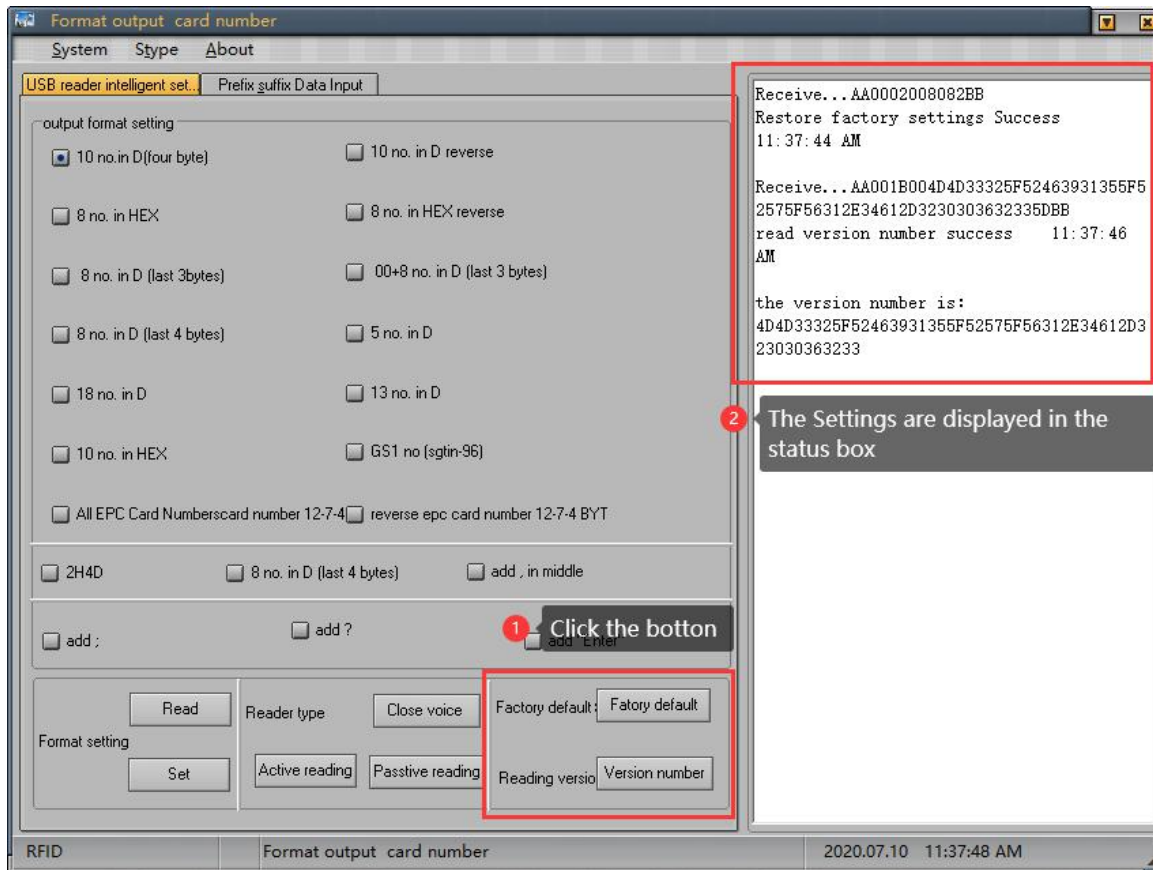
### 2.1 Output format setting



### 2.2 Reader type settings



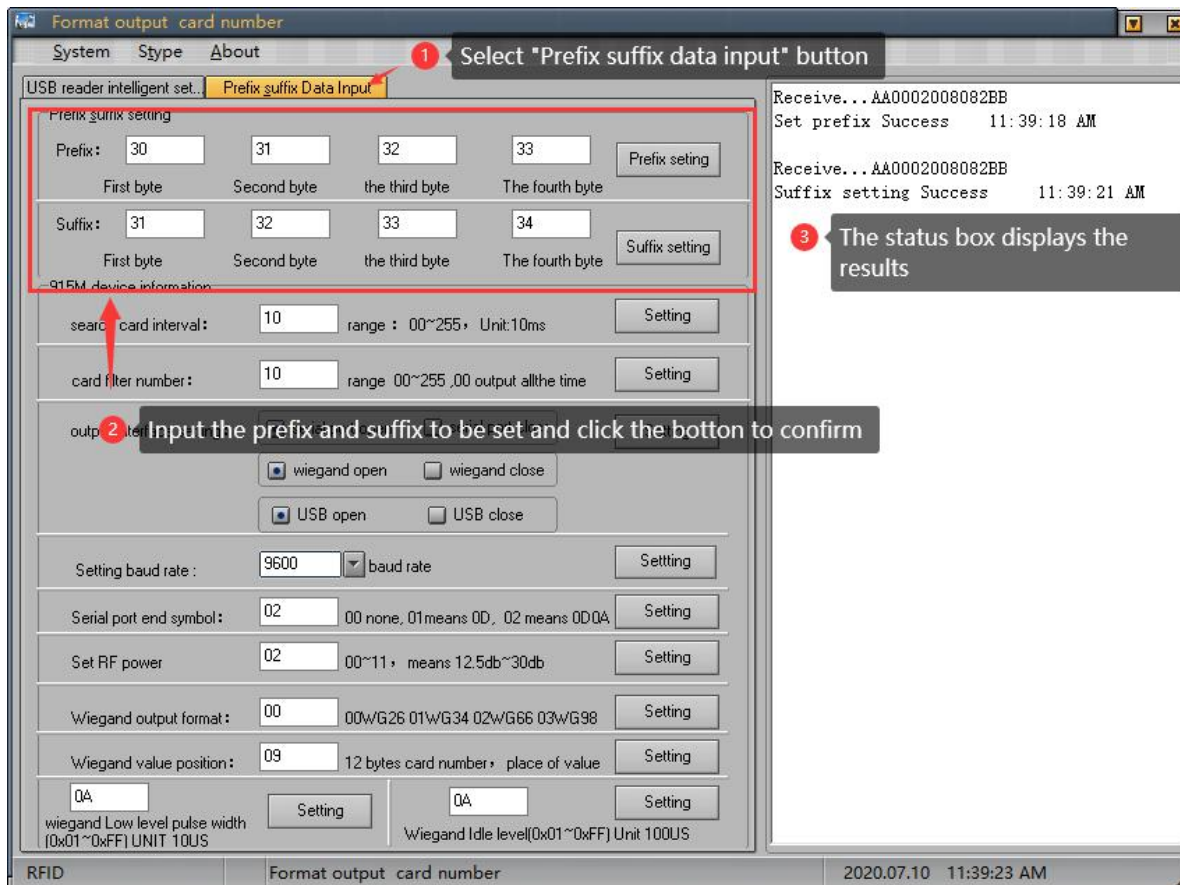
## 2.3 Restore factory settings and version number query



## 3、 Prefix and suffix data entry

### 3.1 Prefix and suffix settings

Fill in the prefix and suffix that need to be added here, up to four bytes. After completing, click the setting button behind, the status window on the right side will display the successful setting, as shown in the figure:



### 3.2 915M machine information

Card search interval value refers to the time interval between two card readings. The larger the value, the longer the interval time;

Card filtering times refer to the number of repeated card readings. The larger the value, the longer the interval between repeated readings;

Output interface setting, open or close the corresponding interface according to requirements, click the setting button to complete the setting;

The default baud rate is 9600, select the required value and click the right setting button to complete the setting;

Add a serial port input terminator, enter the character to be set in the input window, and click the set button to complete the setting;

RF power setting, the greater the value, the higher the power, the farther the sensing distance, enter the required value, click the setting button to complete the setting;

Wiegand output format, enter the corresponding value, representing the corresponding format, click the setting button to complete the setting;

Wiegand value location, 12-byte card number, fill in the required location, click the set button to complete the setting;

Wiegand low-level pulse width range and Wiegand idle-level pulse width range, fill in the value to be set (0x01~0xFF), click the setting button to complete the setting, as shown below:

